

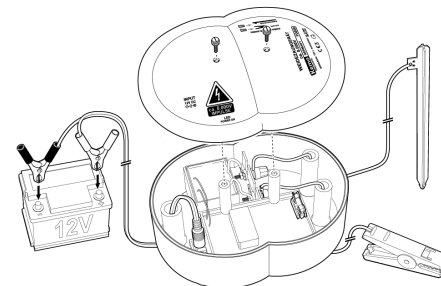
**Kemo Electronic GmbH**

Mato Vukovic
 Leher Landstr. 20
 27607 Geestland
 Germany

Phone: +49 4743 9338-0
 Fax: +49 4743 9338-22

<http://www.kemo-electronic.de>
 email: info@kemo-electronic.de

HR.Nr. HRB 111 486
 UstNr: DE 814 380 369

FG028 - Pasture Fence Device approx. 8000 V

Pulse approx. 310 mJ, 12 V operating voltage (battery) For pastures with larger animals (e.g. horses) with fence lengths up to approx. 5 km (without vegetation). All connections are inside and thus well protected (the cables are led into the interior of the casing through channels). Built-in total discharge protection for the 12 V battery. Very low current consumption (\emptyset approx. 45 mA). Connection cable for a car battery (battery is not included in the delivery) with a cable length of approx. 1.8 m with 2 terminal alligators is included. Connection cable with terminal for the pasture fence is included as well.

Technical Data:

Operating voltage: 12 V/DC (car battery or plug power supply)

Current consumption: \emptyset approx. 45 mA | Battery total discharge protection: automatic disconnection at <8.4 V battery voltage

Power indicator: flashing LED

Output voltage: max. approx. 8000 V / approx. 310 mJ

High-voltage pulse sequence: approx. 2 sec.

Dimensions: approx. 207 x 158 x 93 mm